

WAAS CH <b>40311</b> <b>W01A</b>	APP CRS <b>005°</b>	Rwy ldg TDZE Apt Elev	<b>5234</b> <b>62</b> <b>62</b>
--	------------------------	-----------------------------	---------------------------------------

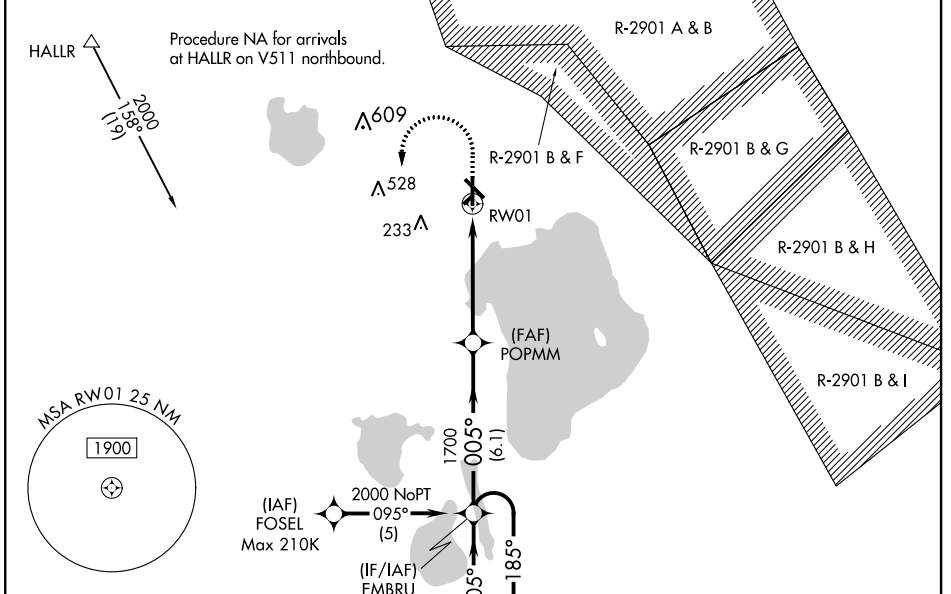
# RNAV (GPS) RWY 1

SEBRING RGNL (SEF)

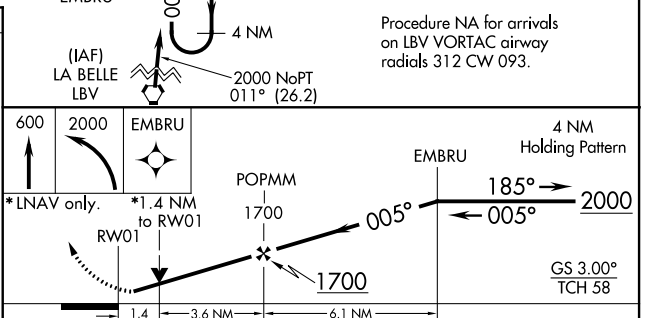
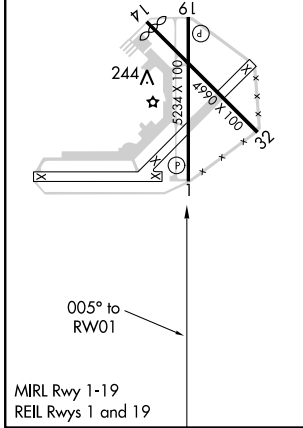
**▼** For uncompensated Baro-VNAV systems, LNAV/VNAV NA below -15°C (5°F) or above 54°C (130°F). DME/DME RNP-0.3 NA. When local altimeter setting not received, use Vero Beach Muni altimeter setting and increase all DA 122 feet and all MDA 140 feet; increase LPV all Cats visibility ½ mile, LNAV/VNAV all Cats visibility and LNAV Cats C and D visibility ¾ mile, increase Circling Cat C visibility ½ mile and Cat D visibility ¼ mile. Night landing: Rwy 14, 32 NA. VDP and Baro-VNAV NA when using Vero Beach altimeter. Helicopter visibility reduction below ¾ SM NA.

**▲ NA** MISSED APPROACH: Climb to 600 then climbing left turn to 2000 direct EMBRU and hold.

AWOS-3 <b>119.475</b>	MIAMI CENTER <b>127.2 317.75</b>	UNICOM <b>122.7</b> (CTAF)
--------------------------	-------------------------------------	-------------------------------



ELEV 62	TDZE 62
---------	---------



CATEGORY	A	B	C	D
LPV DA	381-1 319 (400-1)			
LNAV/VNAV DA	408-1 346 (400-1 3/8)			
LNAV MDA	540-1	478 (500-1)	540-1 3/8	478 (500-1 3/8)
CIRCLING	600-1	538 (600-1)	600-1 1/2	620-2
			538 (600-1 1/2)	558 (600-2)

SE-3, 20 AUG 2015 to 17 SEP 2015

SE-3, 20 AUG 2015 to 17 SEP 2015